

QUICK SHIP SPEC SHEET

LASER BLADE 2 DOWNLIGHT

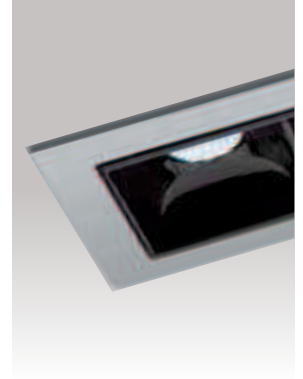


SPECIFICATION SHEET

PAGE: 1 OF 2

Project name: _____

Type: _____



Low luminance architectural downlight

Luminaire characteristic:

Power input: 6W

Lumens: 290 lm (for 3000K, 95CRI)

Luminaire efficacy: 48 lm/W

Source: White LED, (LM-80 tested)

3000K : 95CRI

Lumen maintenance: >90% of initial lumens at 50 000 hours (L90), (LM-79 tested).

Optic: Low luminance Flood optic

Material:

Body: Die-cast aluminum

Reflector: Thermoplastic

Baffle: Thermoplastic

Housing: Galvanized steel

Electrical: Integral high efficiency electronic driver, rated at 50 000 hours 120V-277V.

Mounting: New construction housing, suitable for insulated ceiling.

Finish: White (RAL9010) painted finish.

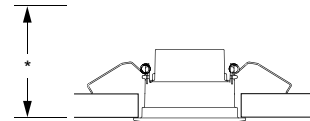
Weight: 0.2lbs (0.09kg)

Warranty: 5 year limited warranty.

Certification: cULus listed for damp location.

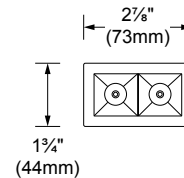
Rating: IP20

Trim



SECTION VIEW

*For minimum clearance height see mounting info on page 2.



BOTTOM VIEW

QUICK SHIP SPEC SHEET

LASER BLADE 2 DOWNLIGHT



SPECIFICATION SHEET

PAGE: 2 OF 2

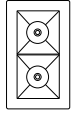
Project name: _____

Type: _____

TECHNICAL DATA

Visit iguzzini.com/us for complete photometric data.

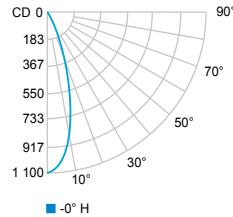
LB02



LOAD (W)	CCT (K)	CRI	OPTIC	LUMENS (lm)	EFFICACY (lm / w)	MAX CANDELA (cd)	MODEL
6W	3000K	95	Flood	290	48	980	I.MQ76

Flood 32° (3000K, 95 CRI)

	Center Beam fc	Beam Width ft
2ft	264	1.1
4ft	66.1	2.3
6ft	29.4	3.4
8ft	16.5	4.5
10ft	10.6	5.7
12ft	7.34	6.8



MOUNTING

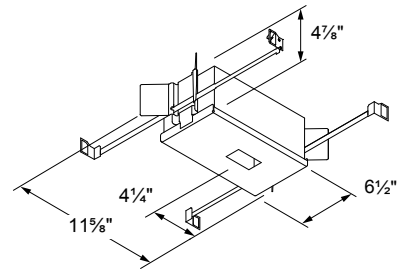
Trim version:

BI5102 - Standard housing suitable for insulated ceiling

Dimensions: 6½" x 11½" (166mm x 294mm)

Hanger bars: 9" to 15¼" (229 to 387mm)

Clearance: 4⅞" (122mm)



INSTALLATION INFO

Ceiling thickness: ⅛" to 1⅞" (3mm to 29mm)

Cut-out dimensions: 1⅞" x 2½" (35mm x 64mm)

ORDERING INFO

I.MQ76 - UNV - 01 <small>MODEL VOLTAGE FINISH</small>			BI5102 <small>MOUNTING</small>	
MODEL Trim ● I.MQ76 - 3000K, 95CRI			MOUNTING Trim ● BI5102 - Insulated ceiling housing	
VOLTAGE ● UNV - 120-277V		FINISH ● 01 - White		

DUE TO CONTINUOUS IMPROVEMENTS, THE INFORMATION HEREIN MAY BE CHANGED WITHOUT NOTICE.

LAST UPDATE: January 28, 2019

JP - R2